

Enterotach® Family of Gastrointestinal Sound Analysis Systems

◆ Enterotach® Pro

Specifications:

- Portable recording unit
 - » 55 minutes record time
 - » expandable memory cards available
- 8,000 Hz sampling
- Detailed analysis of up to 600 sounds per session
- Quantitative metrics include:
 - » sound-sound interval
 - » standard deviation of sound-sound interval
 - » sounds per min.
 - » % time as sound
 - » average sound frequency (Hz)
 - » average sound length
 - » envelope amplitude
- Graphs results including:
 - » sound wave
 - » individual sound time series
 - » power spectrum of sounds
 - » metric kinetics
- Export data for third party software.

Enterotach® Pro is a hardware/software system for the convenient acquisition and analysis of gastrointestinal sounds[†]. The system includes an electronic stethoscope and handheld digitizer which provides a completely portable recording system. A dedicated sound analysis software package automatically performs data reduction.

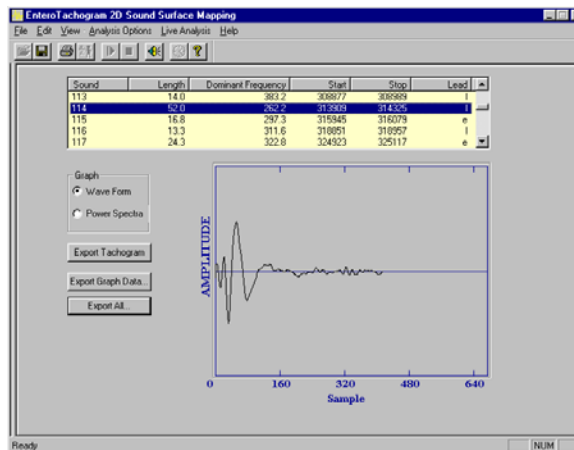
Enterotach® Pro recognizes gastrointestinal sounds and automatically analyzes the sound recordings to produce a quantitative sound tachogram. This allows for the objective characterization of the sound using metrics such as the sound-sound interval, the standard deviation of the sound-sound intervals, the sounds per minute and the percent time occupied by gastrointestinal sounds.



Individual sounds may be analyzed, including the power spectrum and times series values. The user can also manually select sound fragments for analysis.

Sound metrics may also be automatically calculated for regular segments of a recording. This allows for the construction of kinetic analysis graphs of the change in values over time.

[†]Craine BL, Silpa M, O'Toole C. 2001. Enterotachogram Analysis to Distinguish Irritable Bowel Syndrome from Crohn's Disease. Dig. Dis. and Sci. 46(9):1974-1979.



Individual sound wave detected by Enterotach® Pro

Requirements:

- Windows 95 or greater
- Pentium II, 100MHz or greater
- 64 MB RAM
- CD-ROM
- 9-pin Serial port
- 25-pin Parallel port

Western Research Company
INCORPORATED  **Innovative Products for Gastroenterology**

2127 E. Speedway, Tucson, Az 85719 USA
www.wrc-inc.com